

CNDP1 Antibody (C-term)
Affinity Purified Rabbit Polyclonal Antibody (Pab)
Catalog # AP9166b**Specification**

CNDP1 Antibody (C-term) - Product Information

Application	FC, IHC-P, WB,E
Primary Accession	Q96KN2
Reactivity	Human
Host	Rabbit
Clonality	Polyclonal
Isotype	Rabbit IgG
Calculated MW	56692
Antigen Region	415-443

CNDP1 Antibody (C-term) - Additional Information**Gene ID** 84735**Other Names**

Beta-Ala-His dipeptidase, CNDP dipeptidase 1, Carnosine dipeptidase 1, Glutamate carboxypeptidase-like protein 2, Serum carnosinase, CNDP1, CN1, CPGL2

Target/Specificity

This CNDP1 antibody is generated from rabbits immunized with a KLH conjugated synthetic peptide between 415-443 amino acids from the C-terminal region of human CNDP1.

Dilution

FC~~1:10~50

IHC-P~~1:50~100

WB~~1:1000

E~~Use at an assay dependent concentration.

Format

Purified polyclonal antibody supplied in PBS with 0.09% (W/V) sodium azide. This antibody is purified through a protein A column, followed by peptide affinity purification.

Storage

Maintain refrigerated at 2-8°C for up to 2 weeks. For long term storage store at -20°C in small aliquots to prevent freeze-thaw cycles.

Precautions

CNDP1 Antibody (C-term) is for research use only and not for use in diagnostic or therapeutic procedures.

CNDP1 Antibody (C-term) - Protein Information**Name** CNDP1 ([HGNC:20675](#))

Synonyms CN1, CPGL2

Function Catalyzes the peptide bond hydrolysis in Xaa-His dipeptides, displaying the highest activity toward carnosine (beta-alanyl-L- histidine) and anserine (beta-alanyl-3-methyl-histidine).

Cellular Location

Secreted.

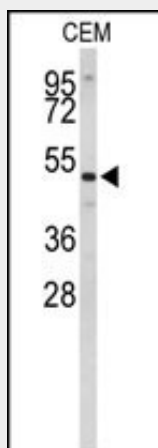
Tissue Location

Found in serum and adult nervous central system. Absent in serum from patients with homocarnosinosis

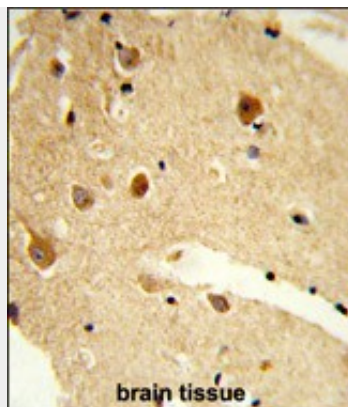
CNDP1 Antibody (C-term) - Protocols

Provided below are standard protocols that you may find useful for product applications.

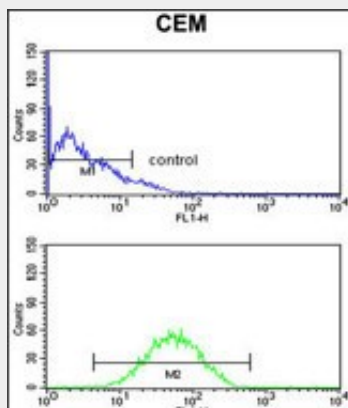
- [Western Blot](#)
- [Blocking Peptides](#)
- [Dot Blot](#)
- [Immunohistochemistry](#)
- [Immunofluorescence](#)
- [Immunoprecipitation](#)
- [Flow Cytometry](#)
- [Cell Culture](#)

CNDP1 Antibody (C-term) - Images

Western blot analysis of CNDP1 Antibody (C-term) (Cat. #AP9166b) in CEM cell line lysates (35ug/lane). CNDP1 (arrow) was detected using the purified Pab.



Formalin-fixed and paraffin-embedded human brain tissue reacted with CNDP1 Antibody (C-term), which was peroxidase-conjugated to the secondary antibody, followed by DAB staining. This data demonstrates the use of this antibody for immunohistochemistry; clinical relevance has not been evaluated.



CNDP1 Antibody (C-term) (Cat. #AP9166b) flow cytometry analysis of CEM cells (bottom histogram) compared to a negative control cell (top histogram). FITC-conjugated goat-anti-rabbit secondary antibodies were used for the analysis.

CNDP1 Antibody (C-term) - Background

CNDP1 encodes a member of the M20 metalloprotease family. The encoded protein is specifically expressed in the brain, is a homodimeric dipeptidase which was identified as human carnosinase. This protein contains trinucleotide (CTG) repeat length polymorphism in the coding region.

CNDP1 Antibody (C-term) - References

Craig,D.W., et.al., Diabet. Med. 26 (11), 1090-1098 (2009)
Mooyaart,A.L., et.al., Diabetes Res. Clin. Pract. 85 (3), 272-278 (2009)